


How to set recording in TF Card & Computer in Browser

1. Recording in TF card



- 1) Click on the  icon to access the “Record” settings
- 2) Choose “on”
- 3) Choose between “First stream” or “Second stream”
- 4) Choose the time schedule for recording
- 5) Click on “Apply”

| Record Settings | | | | | | | | | | | | | | | | | | | | | | | | |
|---|---|---|---|---|---|---|---|---|---|---|----|----|----|----|----|----|----|----|----|----|----|----|----|----|
| Whether to Record: | <input type="radio"/> On <input checked="" type="radio"/> Off | | | | | | | | | | | | | | | | | | | | | | | |
| Stream: | First stream | | | | | | | | | | | | | | | | | | | | | | | |
| | 0 | 1 | 2 | 3 | 4 | 5 | 6 | 7 | 8 | 9 | 10 | 11 | 12 | 13 | 14 | 15 | 16 | 17 | 18 | 19 | 20 | 21 | 22 | 23 |
| Sunday | | | | | | | | | | | | | | | | | | | | | | | | |
| Monday | | | | | | | | | | | | | | | | | | | | | | | | |
| Tuesday | | | | | | | | | | | | | | | | | | | | | | | | |
| Wednesday | | | | | | | | | | | | | | | | | | | | | | | | |
| Thursday | | | | | | | | | | | | | | | | | | | | | | | | |
| Friday | | | | | | | | | | | | | | | | | | | | | | | | |
| Saturday | | | | | | | | | | | | | | | | | | | | | | | | |
| <div>Apply Select List Clear List</div> | | | | | | | | | | | | | | | | | | | | | | | | |

[Device information](#)
[Time set](#)
[Video settings](#)
[Audio Settings](#)
[Record Settings](#)
[Alarm Service Settings](#)
[Email](#)
[FTP](#)
[System Log](#)
[Network Settings](#)
[Wireless](#)
[DDNS Settings](#)
[PTZ set](#)
[Multiple settings](#)
[User Settings](#)
[Maintain](#)
[ONVIF](#)
[Motion detection](#)
[Auto Snap](#)
[Video mask](#)
[Image](#)
[Back](#)

2. Recording to computer disk

- 1) The main interface into the machine, as shown below;



- 2) Click on , select the recording path;

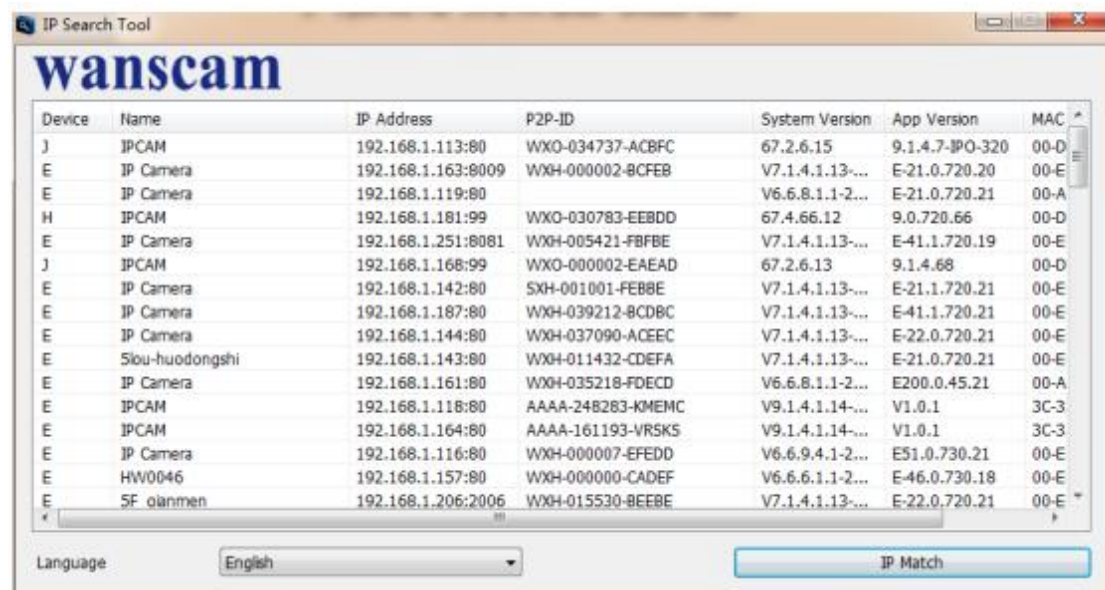


- 3) Click on , Start recording.

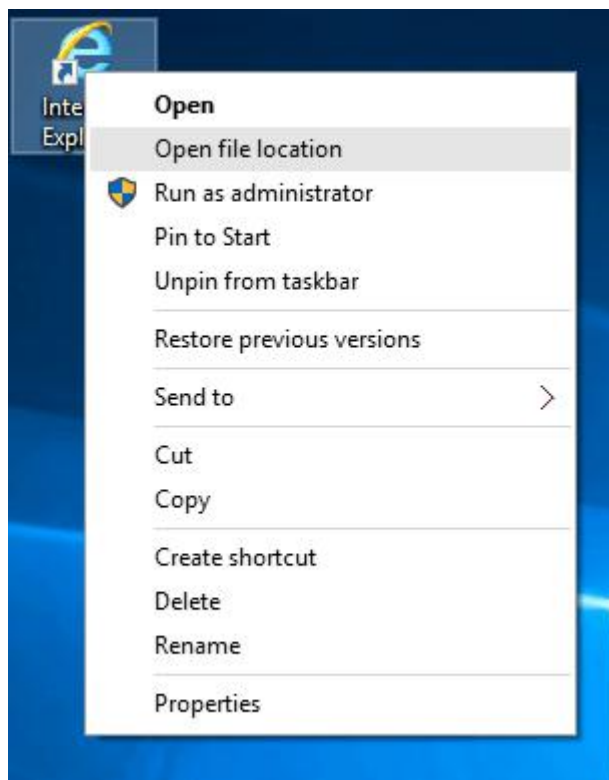


Note : If you can not change the recording path , please follow these steps:

First, please open search tool, Find the camera's ip address and copy it :



Then, Run IE browser as administrator :



Finally, Paste IP address of the camera in IE browser, Click “Enter”, then you can modify the video path as below :

